

FIG. 2

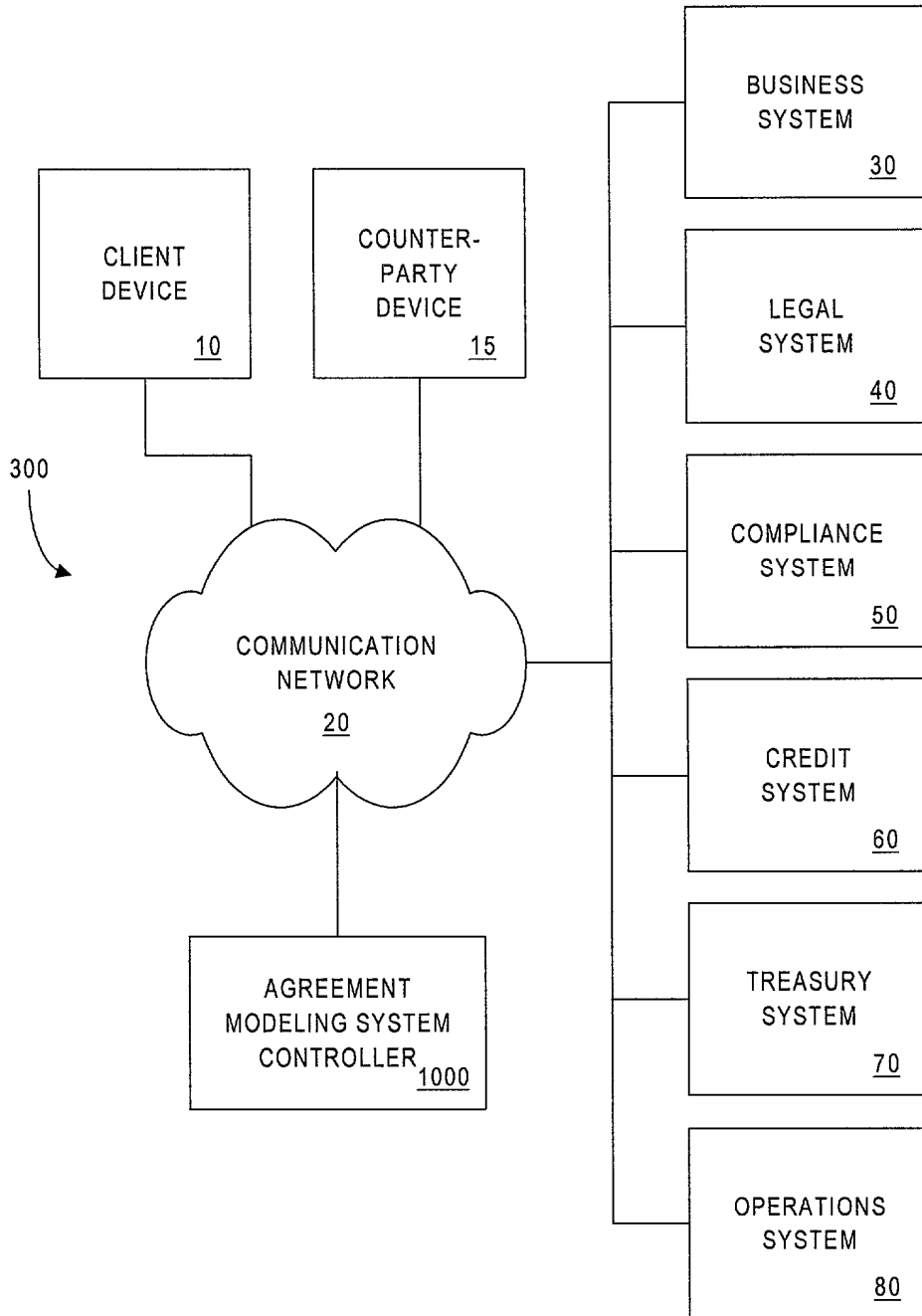


FIG. 3

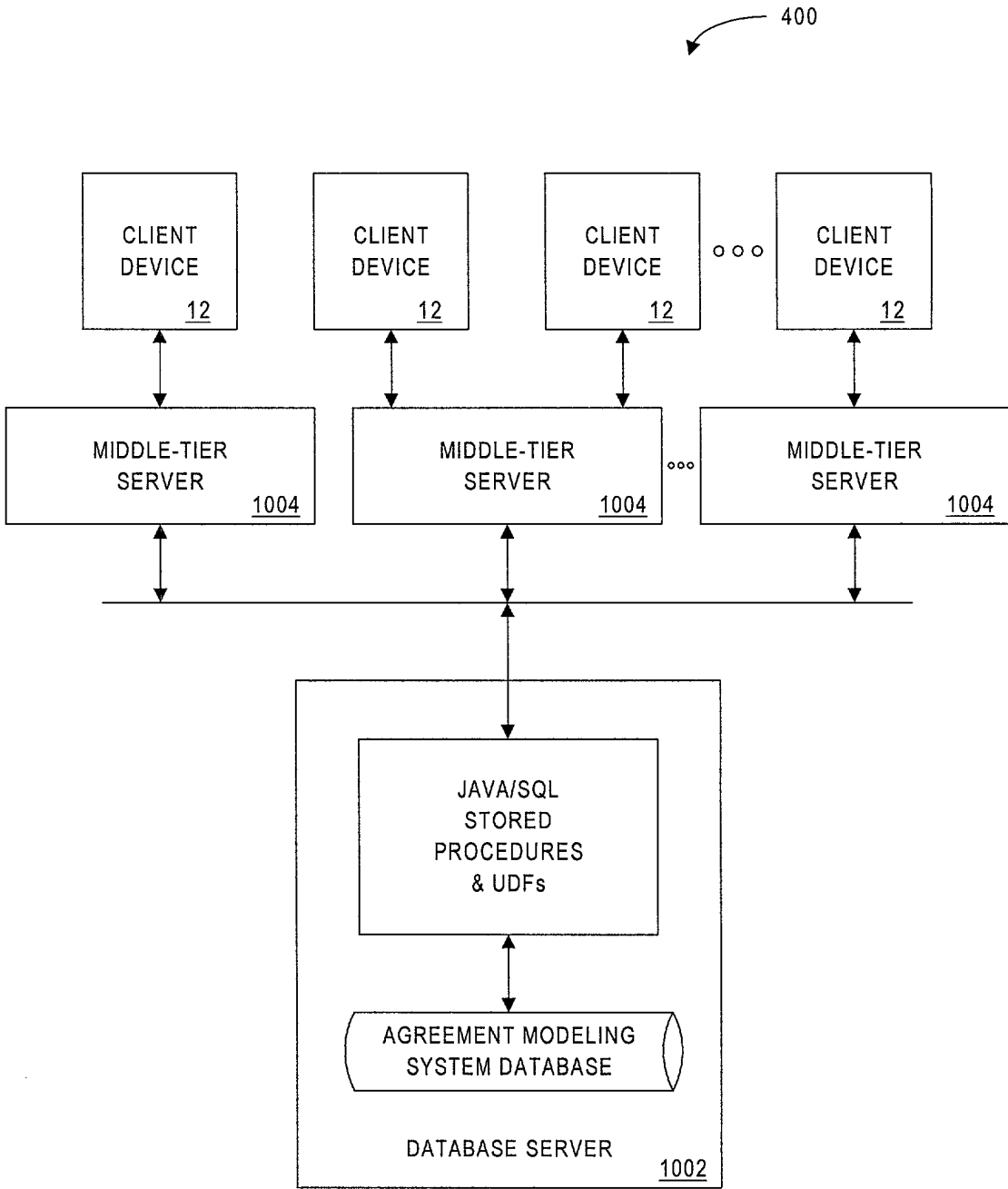


FIG. 4

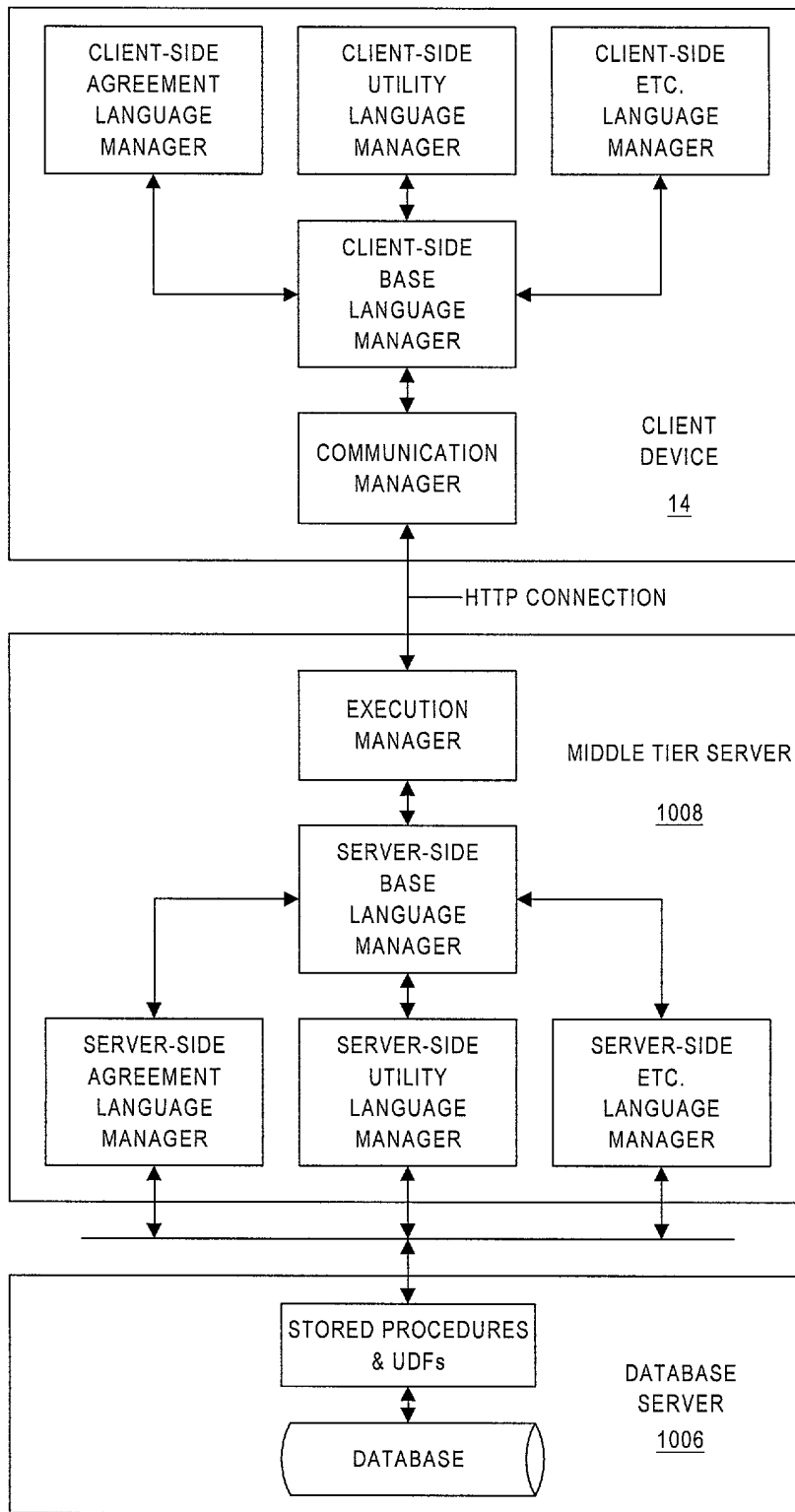


FIG. 5

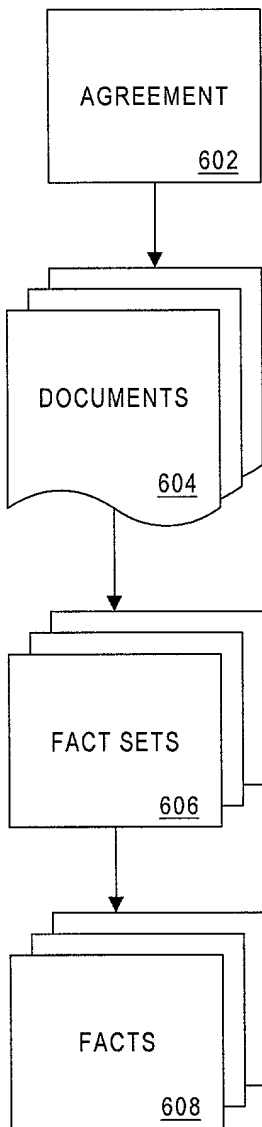


FIG. 6

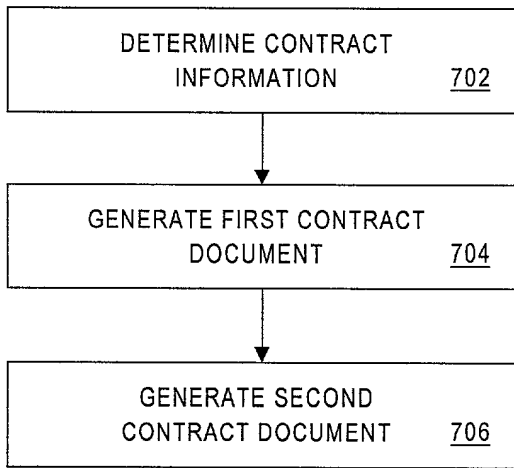


FIG. 7

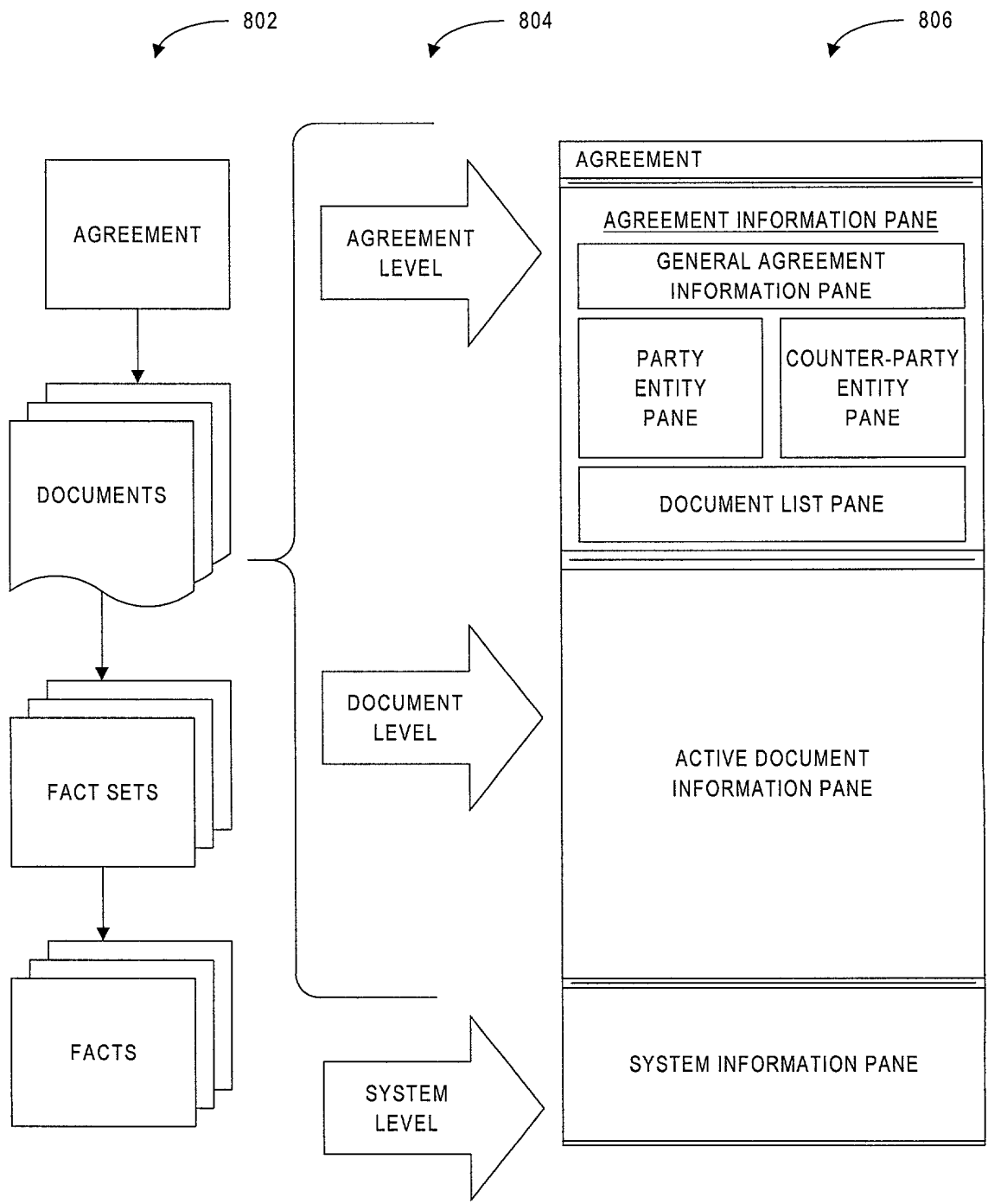


FIG. 8



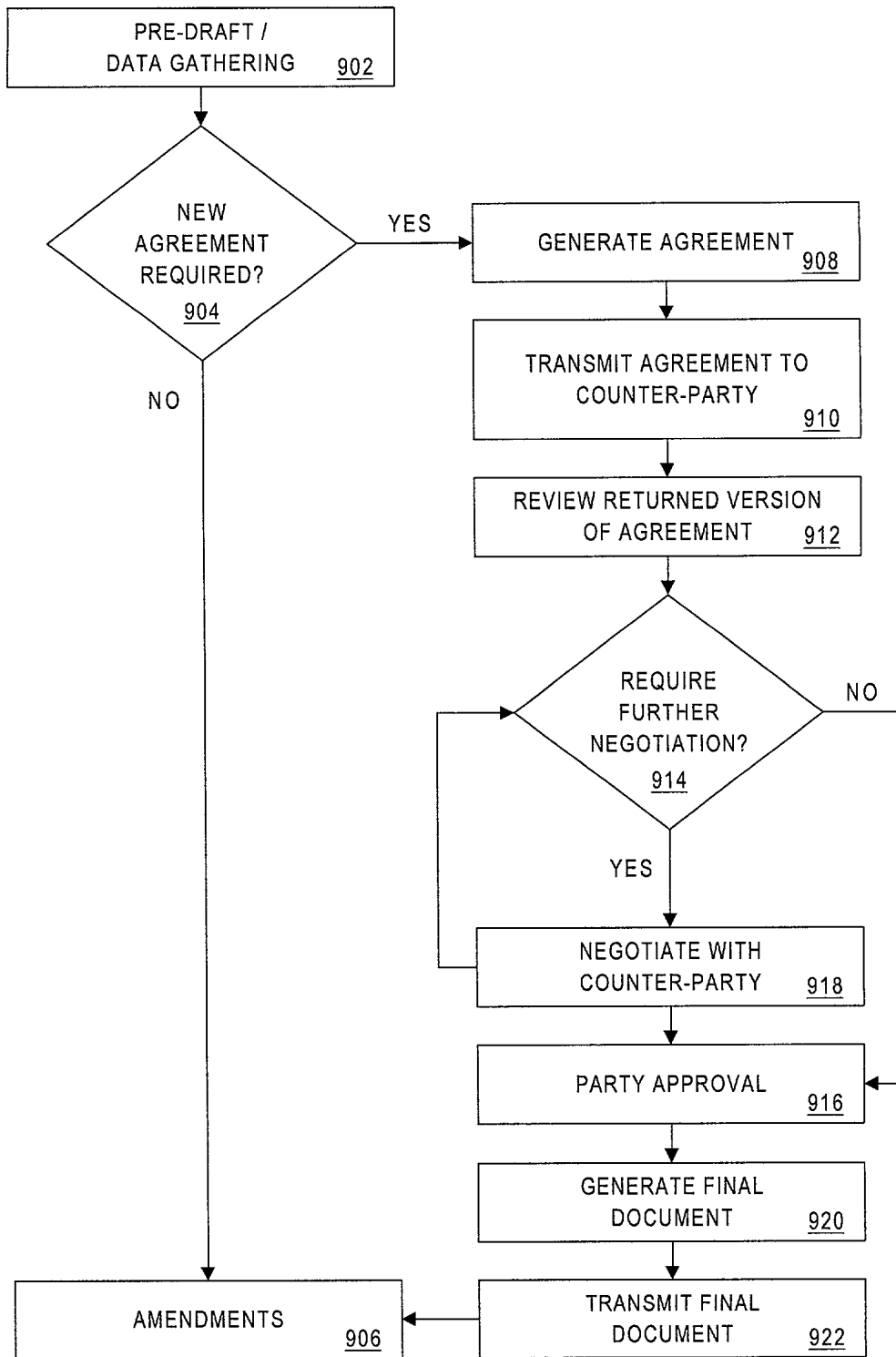


FIG. 9

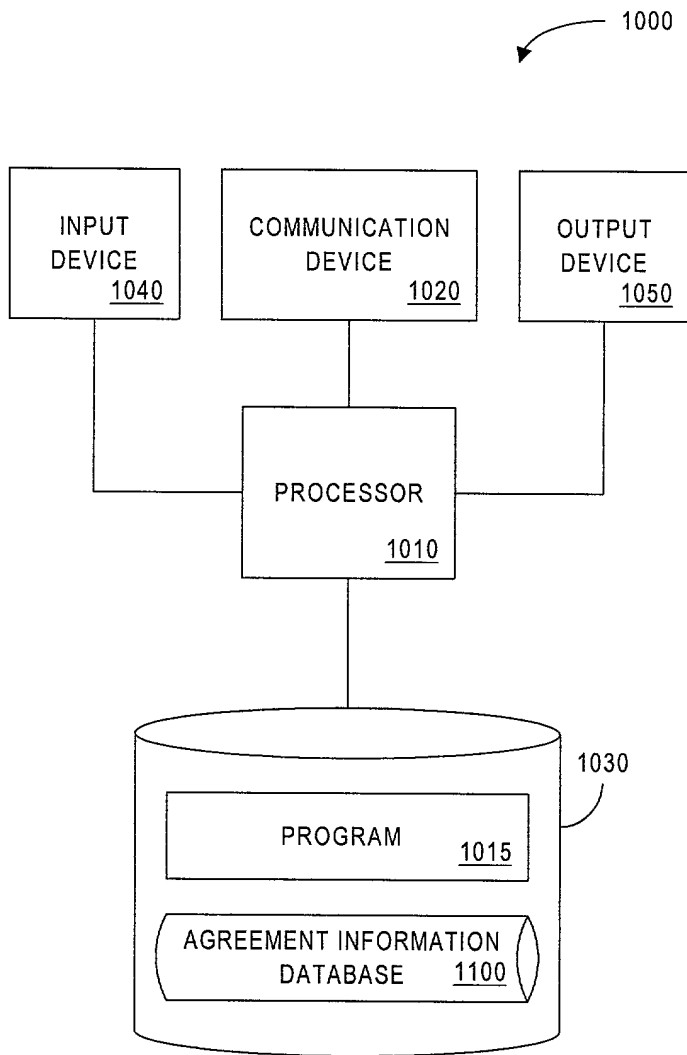



FIG. 10

1100



AGREEMENT IDENTIFIER <u>1102</u>	AGREEMENT TYPE <u>1104</u>	COUNTER-PARTY COMMUNICATION ADDRESS <u>1106</u>
A101	MASTER AGREEMENT (ISDA_1.0)	CONTRACTS@CBAG.COM
A101-01	AMENDMENT	FACSIMILE: (212) 555-1234
A101-02	AMENDMENT	FACSIMILE: (212) 555-1234
A102	MASTER AGREEMENT (OTC_2.2)	NONE (GENERATE HARD COPIES)

FIG. 11

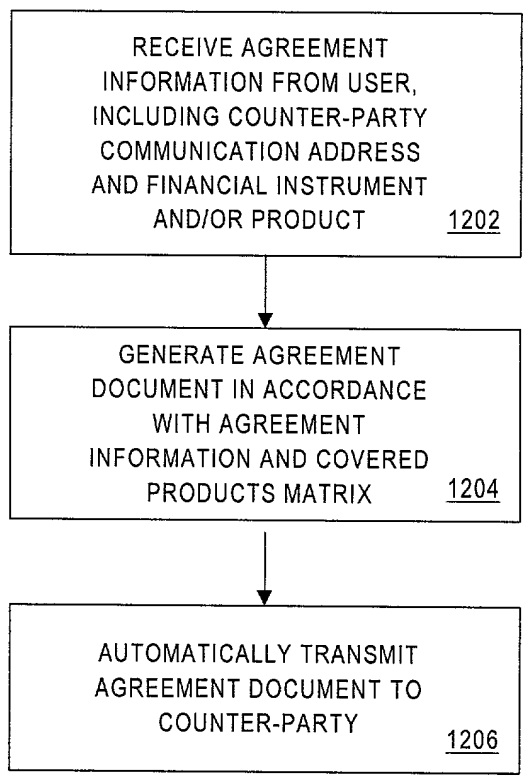


FIG. 12

		SWAPS				OPTIONS					
		BUY		SELL		BUY		SELL			
		CALL	PUT	OTHER	CALL	PUT	OTHER	CALL	PUT	OTHER	
EQUITY	STOCK										
	INDEX										
FIXED INCOME	BONDS										
	INDEX										
	BANK NOTES										
	WHOLE LOANS									Y	
COMMODITIES	METALS	PRECIOUS	GOLD								
			SILVER							Y	
		RARE	COPPER								
			NICKEL								
	ENERGY	NATURAL GAS									
		CRUDE OIL									
REFINED PRODUCTS											
ELECTRICITY											

FIG. 13

	SWAPS	OPTIONS					
		BUY			SELL		
		CALL	PUT	OTHER	CALL	PUT	OTHER
EQUITY	STOCK						
	INDEX						
FIXED INCOME	BONDS						
	INDEX						
	BANK NOTES						
	WHOLE LOANS						
COMMODITIES	METALS	PRECIOUS					
			GOLD	Y			Y
			SILVER	Y			Y
			COPPER	Y			Y
		RARE					
		NICKEL	Y			Y	
	ENERGY		NATURAL GAS				Y
			CRUDE OIL				Y
		REFINED PRODUCTS				Y	
		ELECTRICITY				Y	

FIG. 14

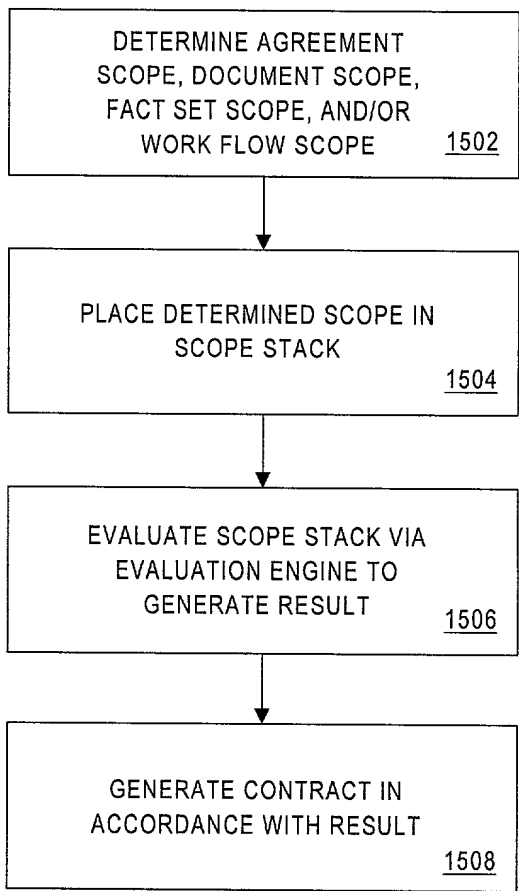


FIG. 15

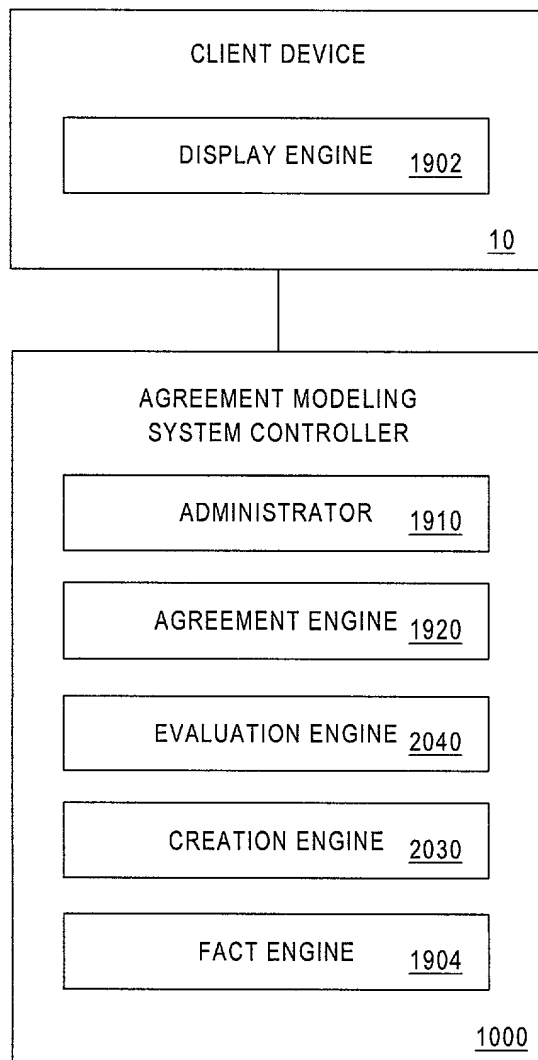


FIG. 16A



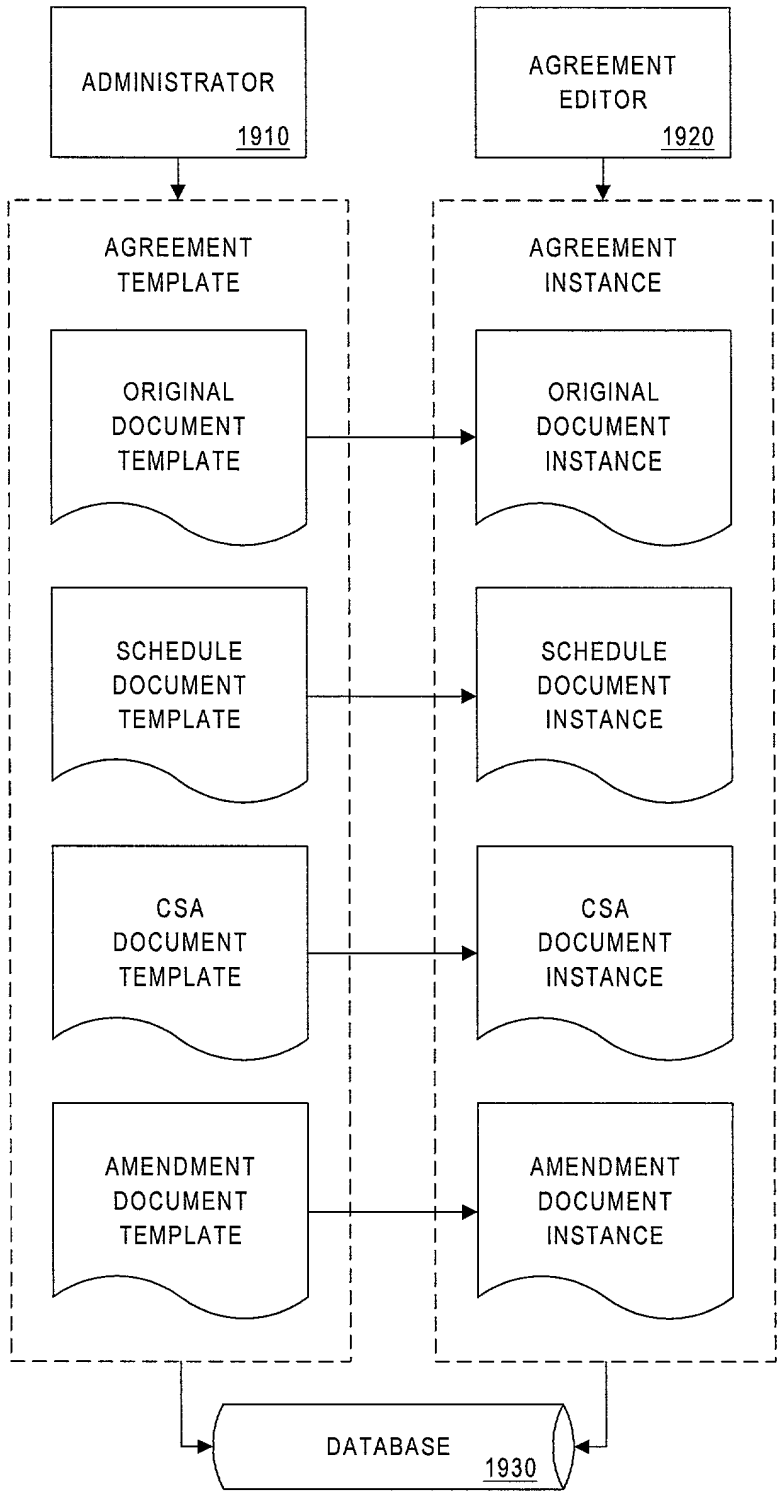


FIG. 16B

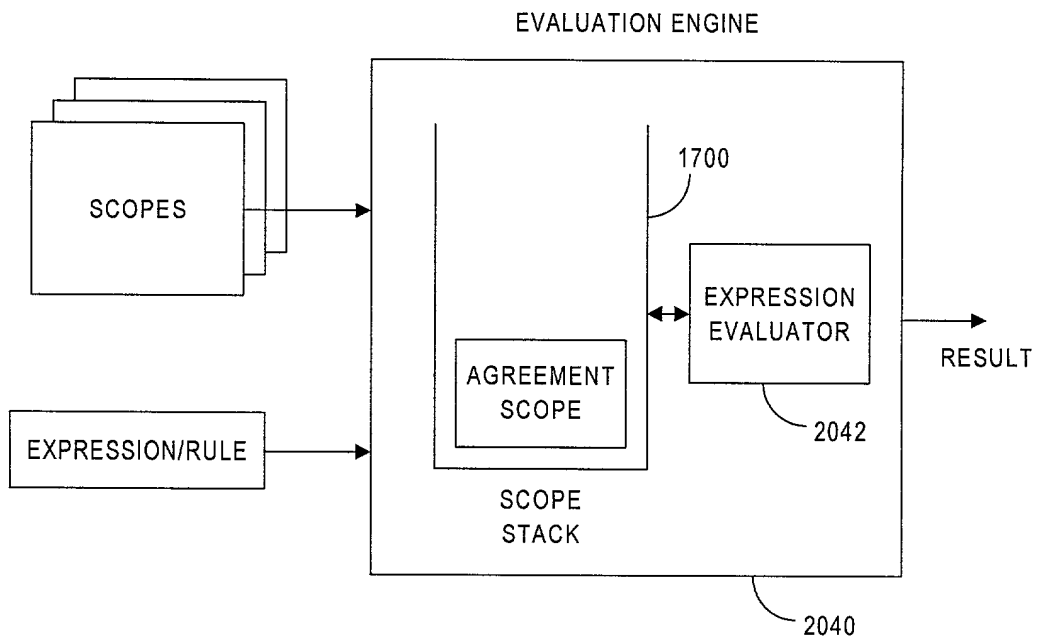


FIG. 17

FIG. 18

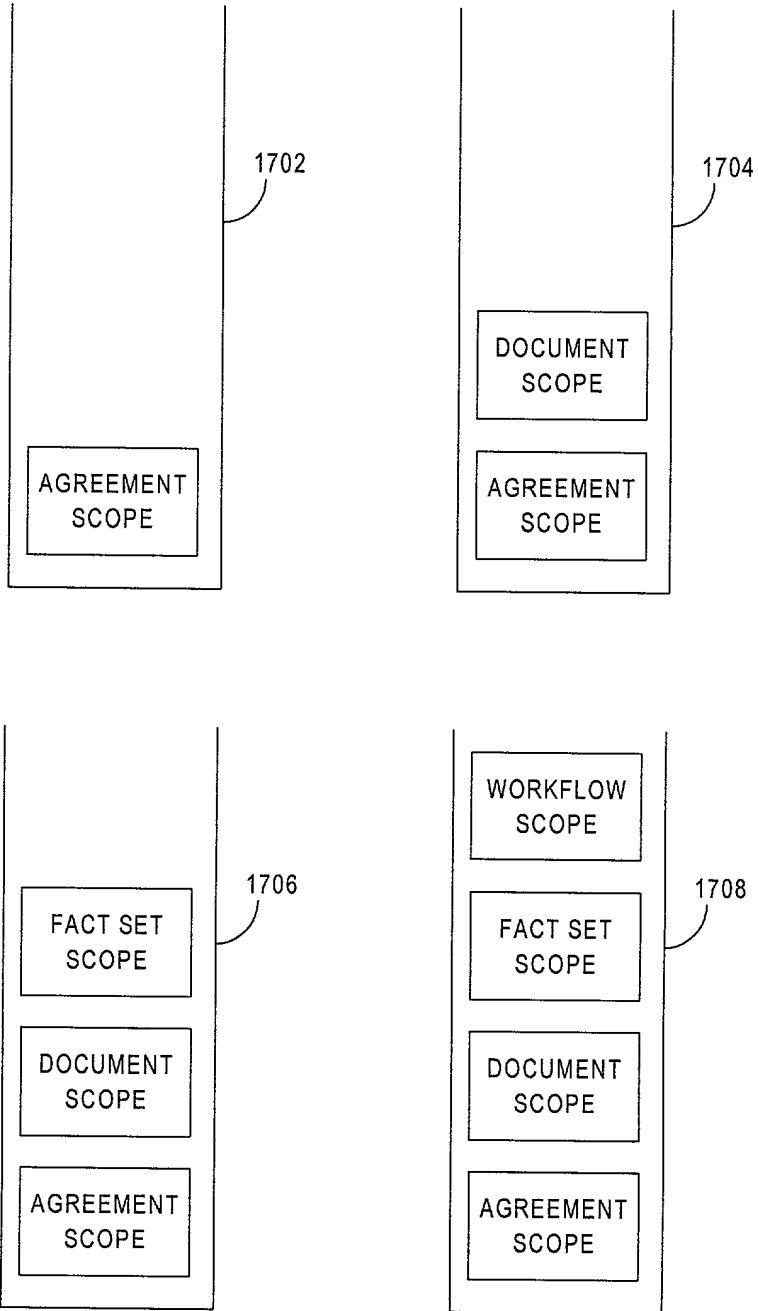


FIG. 18

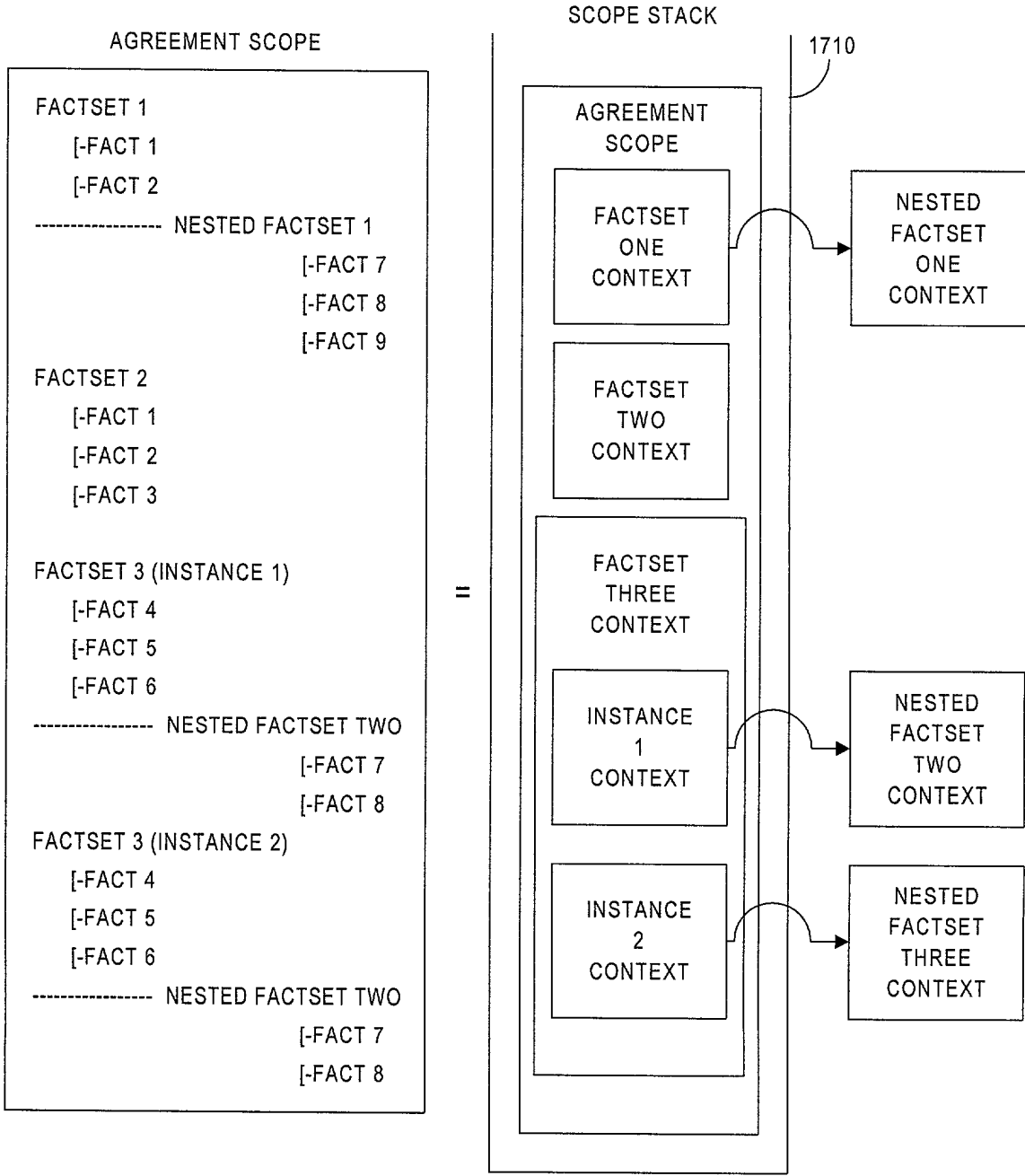


FIG. 19

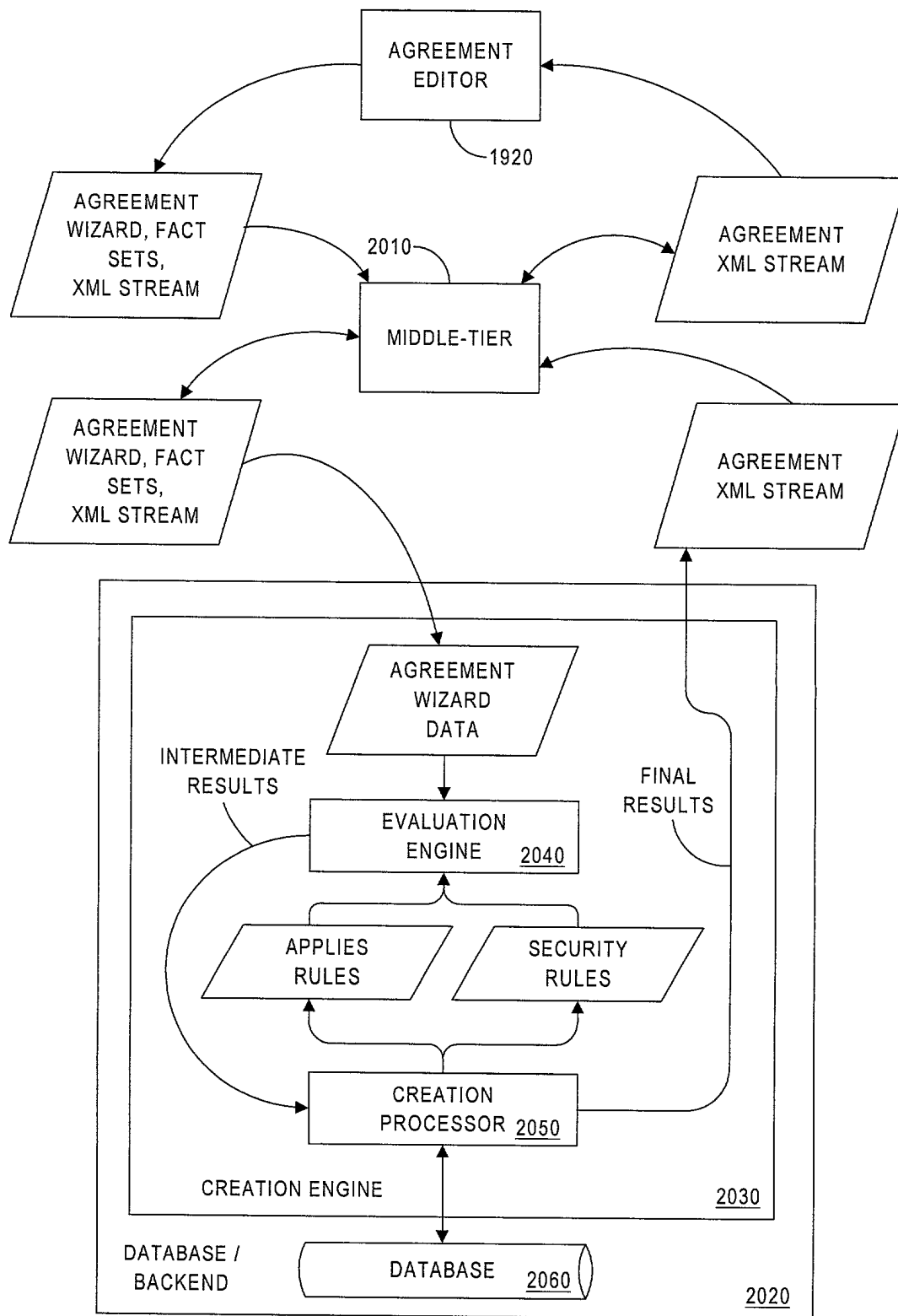


FIG. 20

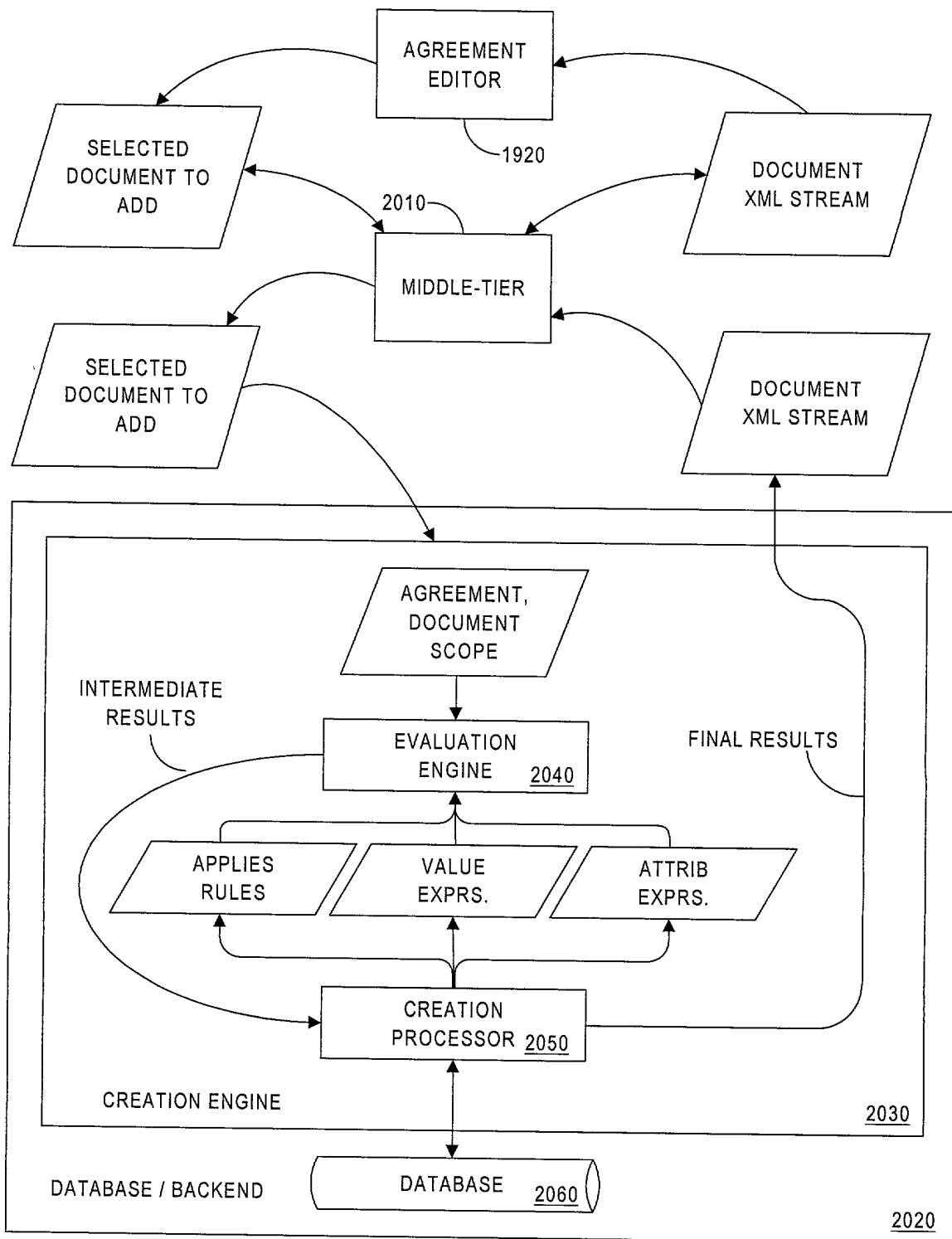


FIG. 21

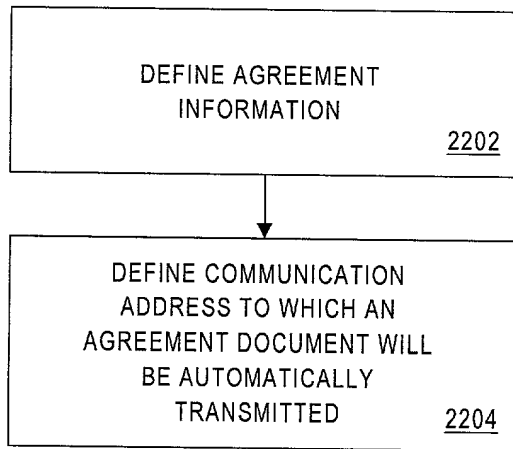


FIG. 22

2300

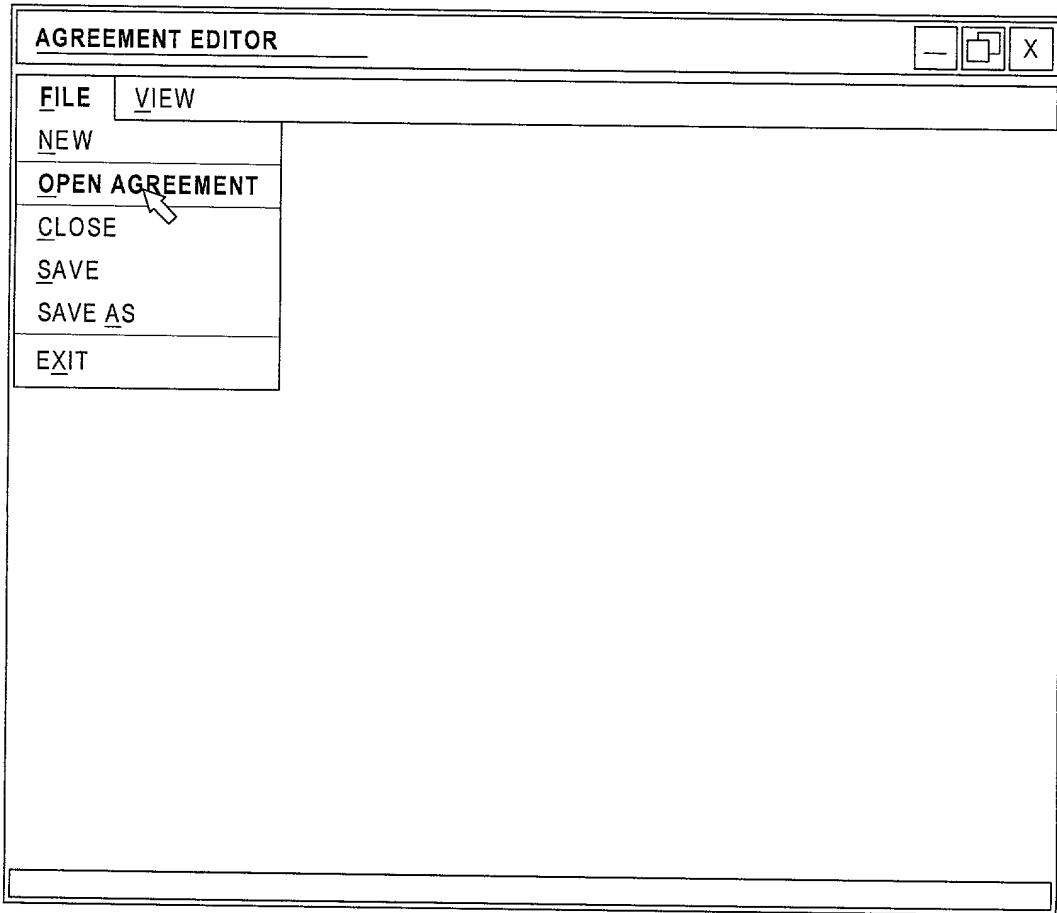


FIG. 23



2400 →

**AGREEMENT EDITOR** [ ] [ ] [X]

FILE VIEW

[ ] [ ] [ ] [ ] [ ]

**LCA TODAY**

<b>AGREEMENT DATA</b>	AGREEMENT TYPE	1997 IGDA MASTER	▽
COUNTER-PARTY DATA	AGREEMENT DATE	9/26/2000	▽
CREDIT SUPPORT	AGREEMENT STARTED	YES <input checked="" type="radio"/> NO <input type="radio"/> UNKNOWN <input type="radio"/>	
CROSS ACCELERATION	AGREEMENT TERMINATED	YES <input checked="" type="radio"/> NO <input type="radio"/> UNKNOWN <input type="radio"/>	
	TERMINATION DATE	11/28/2000	▽
	AGREEMENT COUNTER-PARTY	CITIBANK	▽
	ENTITY	GSCO	▽
	GROUP	DERIVS	▽
	TYPE	CLOSE-OUT	▽

GENERAL AGREEMENT HELP    COVERED PRODUCTS    AGREEMENT DOCUMENT

FIG. 24

2500

**AGREEMENT EDITOR**

FILE VIEW

**LCA TODAY**

- AGREEMENT DATA
- COUNTER-PARTY DATA**
- CREDIT SUPPORT
- CROSS ACCELERATION

**COUNTER-PARTY DATA**

**CITIBANK AG**

INSERT UPDATE DELETE

COUNTER-PARTY NAME CITIBANK AG

COUNTER-PARTY RULE OWN ACCOUNT

COUNTRY OF ORIGIN ENGLAND

INDUSTRY / SIC COMMERCIAL BANK

COMMUNICATION ADDRESS CONTRACTS@CBAG.COM

2502

GENERAL AGREEMENT HELP COVERED PRODUCTS AGREEMENT DOCUMENT

FIG. 25